



KALRO/NAVCDP/ Tomato Leaflet No. 112/2024

MANAGEMENT OF TOMATO MOSAIC VIRUS

Tomato mosaic virus (ToMV) infects tomatoes and causes tomato mosaic disease. The virus can also infect pepper, potato, apple, pear, cherry and numerous weeds.

ToMV can lead to significant economic losses due to reduced yields, poor fruit quality, and increased production costs resulting from disease management efforts.

Symptoms of tomato mosaic disease

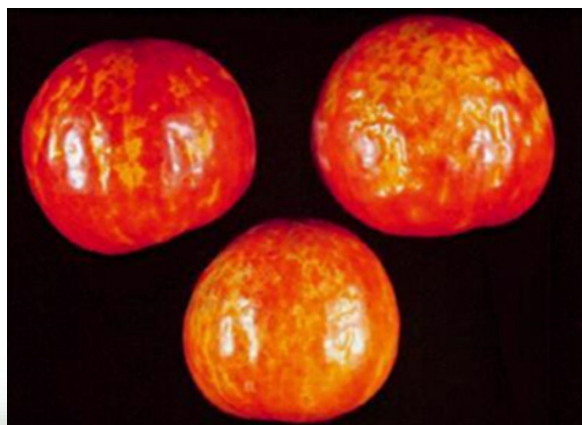
- Yellow mosaic symptoms on the leaves and tomato fruits.
- Mottled light and dark green leaves.
- Irregular ripening of fruits.
- Curling of leaves.
- Stunted growth.
- Flower abortion.

Survival and spread of the virus

- Can exist for 2 years in dry soil or leaf debris, but for shorter periods if soil is moist.
- It easily spreads through workers' hands, tools, and clothes.



*Tomato mosaic symptoms on the leaves
(Source: CABI)*



*Tomato mosaic symptoms on the fruits
(Source: Cornell University)*

Management

- Use certified seeds.
- Avoid planting in contaminated soils.
- Observe field hygiene.
- Avoid contact with tobacco products.
- Eliminate alternative hosts e.g. Datura stramonium.
- Control insects.



Compiled by: Odhiambo, H., Ochieng, V., Ndambuki, J., Tabu, R., Lelgut, D., Kirigua, V.
and Wasilwa, L.

Edited by: Otieno, A.S.

Design and Layout by: Nogrecia N. Mnene

For more information Contacts:

Kenya Agricultural & Livestock Research Organization,
FCRC Muguga South
P.O. Box 30148-00100, Nairobi, 00200, Kenya
Email: fcrc.muguga@kalro.org

