



*KALRO/NAVCDP/ Tomato Leaflet No. 117/2024*

## MANAGEMENT OF TOMATO LEAF CURL VIRUS

Tomato yellow leaf curl virus (TYLC) is the most destructive disease of tomatoes found in tropical and sub-tropical regions.

Plants infected early in their growth staged have significantly reduced fruit production, often leading to 100% losses in heavily infected fields.

### Symptoms

- Yellow (chlorotic) leaf edges.
- Upward curling of the leaves, which appear crumpled.
- Reduced leaf size.
- Stunted growth.
- Low fruit yields.
- Flower drop.

### Survival and spread

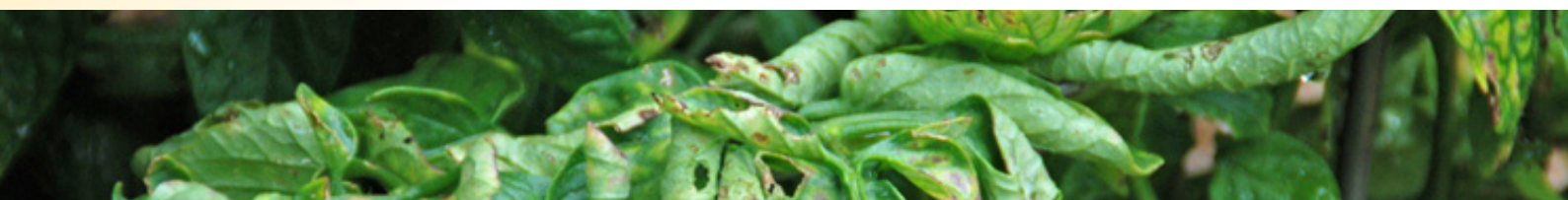
TYLCV is transmitted by whiteflies (*Bemisia tabaci*). The virus is not transmitted by seed, soil or from plant to plant by handling.

### Management

- Control whitefly infestations.
- Destroy old crops (alternative hosts).
- Use of resistant/tolerant varieties.
- Practise crop rotation with non-host crops
- Spray with Lambda-cyhalothrin-based pesticides e.g. Karate 2.5% WG, Tata Umeme 2.5 EC (insecticides should be alternated to prevent development of resistance).



*Tomato leaves curling and cupping upwards (Source: CABI)*





**KALRO @ March 2024**

**Compiled by:** Odhiambo H., Ong'awa M., Thurair, D.M., Ndung'u J. N., Khabi S., Ndambuki J., Ochieng V., Lelgut D., Otipa M. J., Amata R., Wanjala B.W; Kirigua V. and Wasilwa L.

**Edited by:** Kinyua, Z.M. and Otieno, A.S.

**Design and Layout by:** Nogrecia N. Mnene

**For more information Contacts:**

FCRC KALRO-Muguga, P.O. Box 30148- 00100, Muguga

Email: [Fcrc.muguga@kalro.org](mailto:Fcrc.muguga@kalro.org)

