



KALRO/NAVCDP/ Tomato Factsheet No. 036/2024

Management of Powdery Mildew disease in Tomato

Description

The disease is characterized by white talcum-like coatings on leaves. Older plants are more susceptible to infection. It is not known to be seed-borne. Infection occurs when temperatures are high and at a high humidity.

Symptoms

- Leaf surface develops yellow patches which die.
- Disease starts on the upper side and spreads to lower leaf surface.
- Leaves die resulting in sunburn in fruits and weak plants

How to control Powdery Mildew disease

Non-Chemical Control

- Remove and destroy crop debris after harvest.
- Keep the field free of weeds and practise crop rotation.
- Irrigate regularly to avoid drought stress in old crops.

Chemical Control

Use of products containing active ingredients such as Thiophanate-methyl (e.g. Headlines 700 WP), Sulfur (e.g. Devisulphur WP, Flosul Plus, Souvenir 800WDG),

Carbendazim (e.g. Botran 500 SC), Bupirimate (e.g. Nimrod 25EC), Dimethomorph + Mancozeb (e.g. Prequel 720 WP).

Farmers MUST adhere to the recommended tank dose and observe the pre-harvest intervals as advised on the product label.

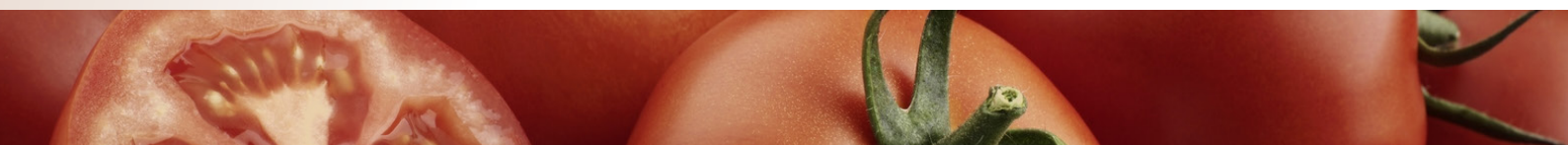
If the problem persists, seek immediate technical support from KALRO Centre nearest you.

Other quick sources of help;

1. Plant clinic nearest you.
2. County agriculture office nearest you.
3. Write to: info@kalro.org.



Powdery mildew of tomato (Source: Vincent Ochieng)





Powdery mildew of tomato (Source: Lusike Wasilwa)



KALRO @ March 2024

Compiled by: Odhiambo H., Ong'awa M., Thurania, D.M., Ndung'u J. N., Khabi S., Ndambuki J., Ochieng V., Lelgut D., Otipa M. J., Amata R., Wanjala B.W, Kirigua V. and Wasilwa L.

Edited by: Kinyua, Z.M. and Otieno, A. S.

Design and Layout by: Nogrecia N. Mnene

For more information Contacts: Director General
Kenya Agricultural & Livestock Research Organization (KALRO)
Kaptagat Rd, Loresho Nairobi Kenya, P.O. Box 5781 I, City Square, Nairobi, 00200, Kenya
Email: info@kalro.org

Cell: Safaricom: +254 722206986/722206988; Airtel: +254 733-333-223/733333224/733333299/736333294

