



KALRO/NAVCDP/ Tomato Leaflet No. 116/2024

MANAGEMENT OF TOMATO RINGSPOT VIRUS

Tomato ringspot virus (ToRSV) is a rare but serious pathogen of tomatoes. It infects a variety of plants including chickweed, dandelion, narrow leaved plantain and fruit crops like apple, grape, peach, and raspberry.

Symptoms

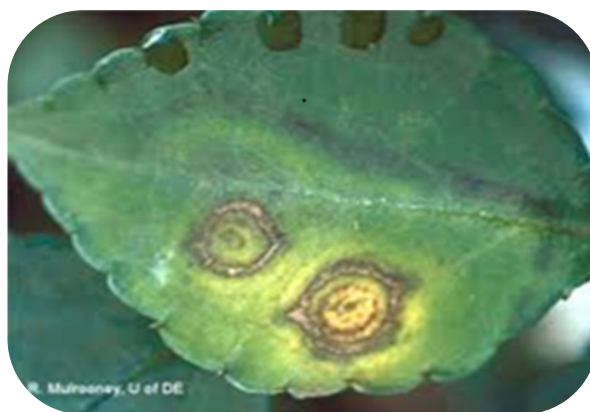
- Ring spots or yellow rings blotch patterns on the foliage.
- Decline in plant growth and a reduction in fruit set.
- Shortened internodes.
- Stunting and small clusters with tiny fruits.

Survival and spread

- It's transmitted mechanically by farm tools and by seed
- Adult nematodes and larvae vector the virus for up to 8 months.
- It affects a wide range of plants including woody shrubs.

Management

- Field sanitation
- Use resistant/tolerant varieties.
- Crop rotation.
- Drench using Azadirachtin-based products (e.g. *Nimbecidine*) to control nematodes.



Tomato leaf with ringspot symptoms (Source: Plantwise)





Yellow ringspots and mottling of tomato fruits (Source: FAO)

Compiled by: Odhiambo, H., Ong'awa, M., Thurair, D.M., Ndung'u, J. N., Khabi, S., Ndambuki, J., Ochieng, V., Lelgut, D., Otipa, M. J., Amata, R., Wanjala, B.W., Kirigua, V. and Wasilwa, L.

Edited by: Kinyua, Z.M.

Design and Layout by: Nogrecia N. Mnene

For more information Contacts:

Food Crop Research Centre- KALRO, Muguga,
P.O. Box 30148- 00100, Nairobi
Email: Fcrc.muguga@kalro.org

